

SIR ROY CALNE

THE PRIVATE GALLERY

September 20 - October 20, 2003

Life is short, the art is long.

Hippocrates

Sponsors:

Novartis Corporation (Malaysia) Sdn. Bhd.

ABN AMRO Bank Berhad

British Council

Sunway College

Riche Monde Sdn. Bhd.



Part proceeds
from sales to
benefit
Malaysian
Society of
Transplantation

SIR ROY CALNE

Solo Exhibition

at

THE PRIVATE GALLERY

14 Jalan 16/5, Section 16, 46350 Petaling Jaya, Selangor, Malaysia

September 20 – October 20, 2003

www.theprivategallery.com

THE PRIVATE GALLERY

14 Jalan 16/5, Section 16
46350 Petaling Jaya
Selangor, Malaysia
Tel: 60-3-7958-2175

(viewing by appointment only)

www.theprivategallery.com

The Private Gallery is delighted to organise, for the second time, an exhibition of works by Sir Roy Calne. The variety of mediums and subject matter is visually stimulating and reflects a very enthusiastic and dedicated craftsman. We hope you enjoy the show.

Shalini Amerasinghe Ganendra
Principal

ARTIST STATEMENT

Since retiring from the Chair of Surgery in Cambridge five years ago, I have been Yeoh Ghim Seng Visiting Professor at the National University of Singapore, primarily involved in developing research in the Department of Surgery.

I travel three times a year to Kuala Lumpur where we have a joint multi-centre trial in progress using an antibody to stop rejection of kidney transplants. My other field of research is in the treatment of diabetes with cell transplants. In Singapore we have a team now trained in the difficult technique of removing the insulin-producing islets from the pancreas of cadaver donors and these will be transplanted to specially selected diabetes patients. Concurrently we are investigating methods of persuading stem cells to produce insulin because there will never be enough cadaver donors to treat diabetes which is one of the commonest and most disabling diseases faced by medical services worldwide. In developing this research we are working together with colleagues at the University of Malaya and I have been involved in kidney transplant operations with Professor SY Tan and have given a number of lectures in the University.

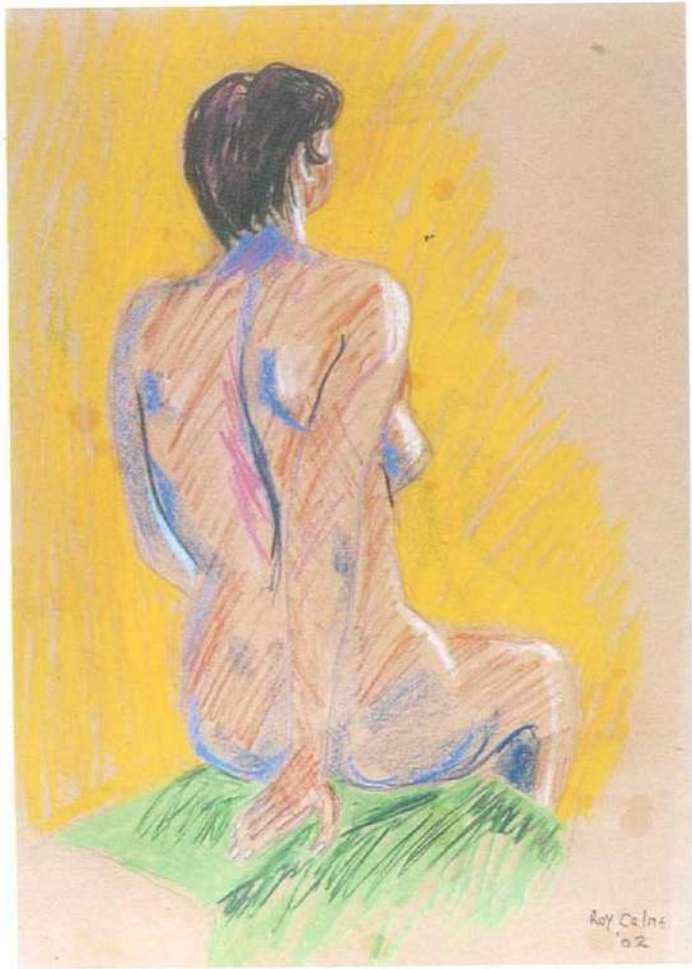
In the past 15 years my life-time interest in painting has been channelled to try and depict the human aspects of organ transplantation, a subject previously never covered by art since transplantation is a new form of treatment.

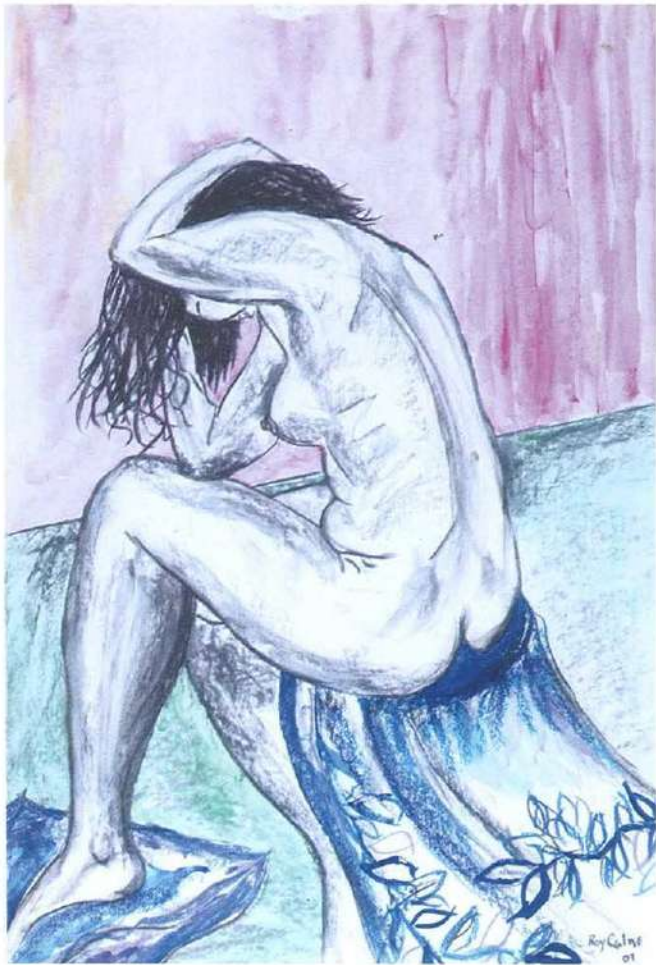
I am also interested in sculpture, particularly modelling in clay and wax. This has many features in common with surgery, being three-dimensional, requiring two hands and a knowledge of anatomy also helps. I have found the medium, although static, sympathetic to the portrayal of movement, particularly dance and sport. To focus on the three dimensions of a model is a discipline that requires a different way of thinking to that of a painting or drawing. I have found that what I learn from sculpture can facilitate drawing and painting and the reverse is also true. Although the potential for image-making is limitless in two dimensions, attempting to extend the perceived static restrictions of three-dimensional sculpture is a recurring and intriguing task.

Sir Roy Calne
July 2003



Professor Bernat Soria 2003 (after Magritte)







Im ket 97
Roy Calne

SIR ROY CALNE > 10

Island Landscape



roy Calne

Regensberg

SIR ROY CALNE > 11





SIR ROY CALNE > 14

Kidney Patient



Dance

SIR ROY CALNE > 15



I try to apply colours like words that shape poems, like notes that shape music.

Joan Miro